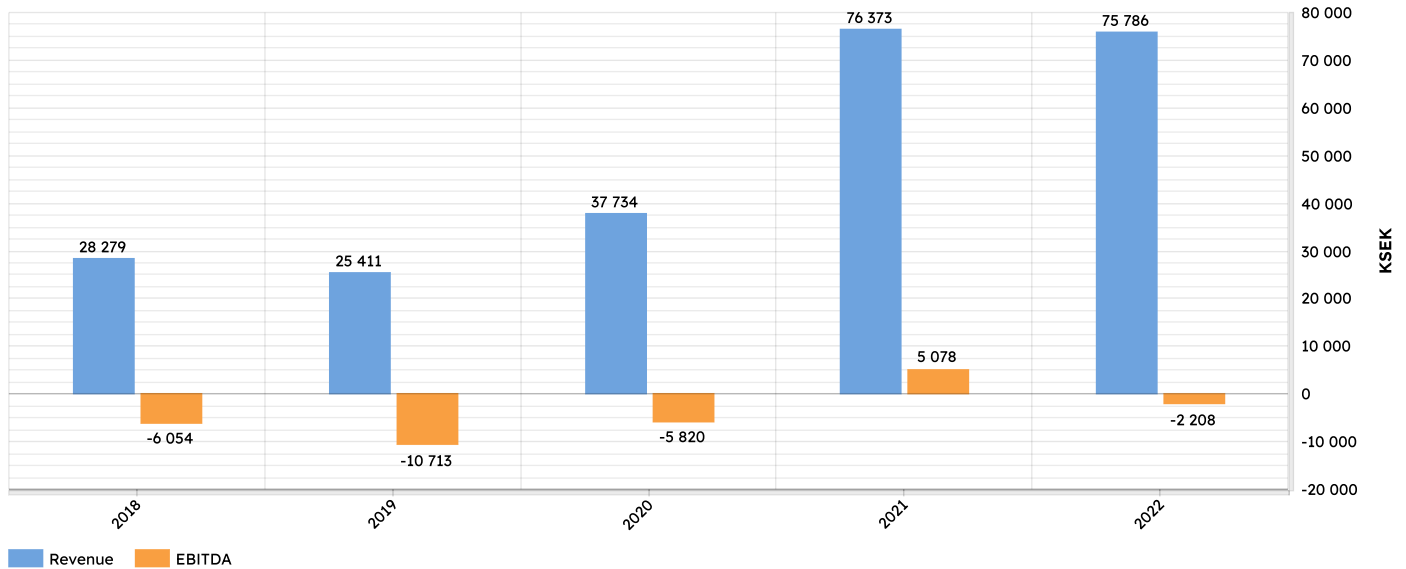


## P&L, 5 years

Revenue & EBITDA



\*Above graph is only showing full operating years. 2023 is excluded.

## P&L, 5 years, summary

Fiscal year: 23-01-01 - 23-12-31

Updated: 23-12-06

Currency: KSEK

|  | 2019           | 2020          | 2021          | 2022          | 2023                       |
|--|----------------|---------------|---------------|---------------|----------------------------|
| Net sales                                      | 25,411         | 37,734        | 76,373        | 75,786        | 33,307 <sup>1</sup>        |
| Own work capitalised                           | 0              | 2,229         | 3,852         | 844           | 0 <sup>1</sup>             |
| Cost of revenue                                | -15,936        | -21,316       | -44,253       | -41,890       | -17,305 <sup>1</sup>       |
| <b>Gross profit</b>                            | <b>9,474</b>   | <b>18,647</b> | <b>35,972</b> | <b>34,740</b> | <b>16,002<sup>1</sup></b>  |
| Personnel costs                                | -11,548        | -12,069       | -16,973       | -20,652       | -14,921 <sup>1</sup>       |
| Expenses                                       | -8,639         | -12,398       | -13,921       | -16,296       | -11,123 <sup>1</sup>       |
| <b>Operating income or loss (EBITDA)</b>       | <b>-10,713</b> | <b>-5,820</b> | <b>5,078</b>  | <b>-2,208</b> | <b>-10,042<sup>1</sup></b> |
| Sum of depreciation / amortization             | -2,108         | -167          | -1,492        | -1,948        | -2,542 <sup>1</sup>        |
| <b>Earnings before interest and tax (EBIT)</b> | <b>-12,820</b> | <b>-5,987</b> | <b>3,586</b>  | <b>-4,156</b> | <b>-12,584<sup>1</sup></b> |
| Financial costs/revenue                        | -708           | -675          | -966          | -1,496        | -1,777 <sup>1</sup>        |
| <b>Earnings before tax (EBT)</b>               | <b>-13,528</b> | <b>-6,662</b> | <b>2,620</b>  | <b>-5,652</b> | <b>-14,362<sup>1</sup></b> |

<sup>1)</sup> Incomplete data The value includes an incomplete period and may change when more data is available

\*Year 2023 shows until 31st of October

## Balance sheet

### Balance sheet, 5 years, summary

Updated: 23-12-06

Fiscal year: 23-01-01 - 23-12-31

Currency: KSEK

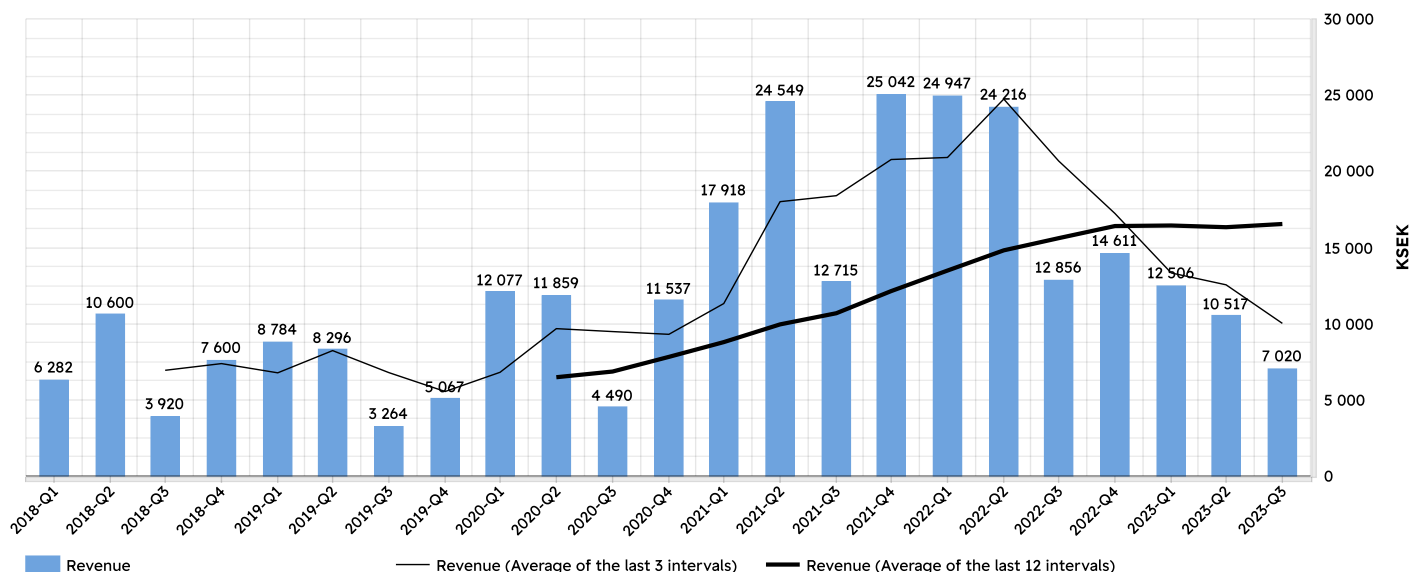
|  | OB             | CB             |                |                | CB             |                             |
|--|----------------|----------------|----------------|----------------|----------------|-----------------------------|
|  | 2019           | 2019           | 2020           | 2021           | 2022           | 2023                        |
| Intangible assets                          | 231            | 1,119          | 6,891          | 7,553          | 7,553          | 8,869 <sup>1</sup>          |
| <b>Total fixed assets</b>                  | <b>4,755</b>   | <b>6,693</b>   | <b>18,197</b>  | <b>21,027</b>  | <b>21,027</b>  | <b>20,521 <sup>1</sup></b>  |
| Inventories                                | 10,952         | 10,265         | 12,974         | 18,223         | 18,223         | 19,074 <sup>1</sup>         |
| Accounts receivables                       | 2,691          | 1,167          | 3,706          | 5,630          | 5,630          | 3,493 <sup>1</sup>          |
| Cash and bank                              | -6,990         | -2,053         | -1,289         | -1,891         | -1,891         | -8,030 <sup>1</sup>         |
| <b>Total current assets</b>                | <b>7,118</b>   | <b>9,719</b>   | <b>16,130</b>  | <b>22,605</b>  | <b>22,605</b>  | <b>15,191 <sup>1</sup></b>  |
| <b>Total assets</b>                        | <b>11,873</b>  | <b>16,412</b>  | <b>34,327</b>  | <b>43,631</b>  | <b>43,631</b>  | <b>35,712 <sup>1</sup></b>  |
| Share capital                              | -2,500         | -2,500         | -2,500         | -2,500         | -2,500         | -2,500 <sup>1</sup>         |
| Equity and untaxed reserves                | 77             | -3,730         | -5,432         | -7,506         | -7,506         | -17,454 <sup>1</sup>        |
| Total long-term liabilities and provisions | -5,042         | -5,842         | -12,674        | -16,651        | -16,651        | -24,458 <sup>1</sup>        |
| Total current liabilities                  | -6,908         | -6,841         | -16,221        | -19,474        | -19,474        | -8,162 <sup>1</sup>         |
| <b>Total equity and liabilities</b>        | <b>-11,873</b> | <b>-16,412</b> | <b>-34,327</b> | <b>-43,631</b> | <b>-43,631</b> | <b>-50,073 <sup>1</sup></b> |
| <b>Calculated result</b>                   | <b>0</b>       | <b>-13,528</b> | <b>-6,662</b>  | <b>2,620</b>   | <b>0</b>       | <b>-14,362 <sup>1</sup></b> |

<sup>1)</sup> Incomplete data The value includes an incomplete period and may change when more data is available

\*Year 2023 shows until 31st of October

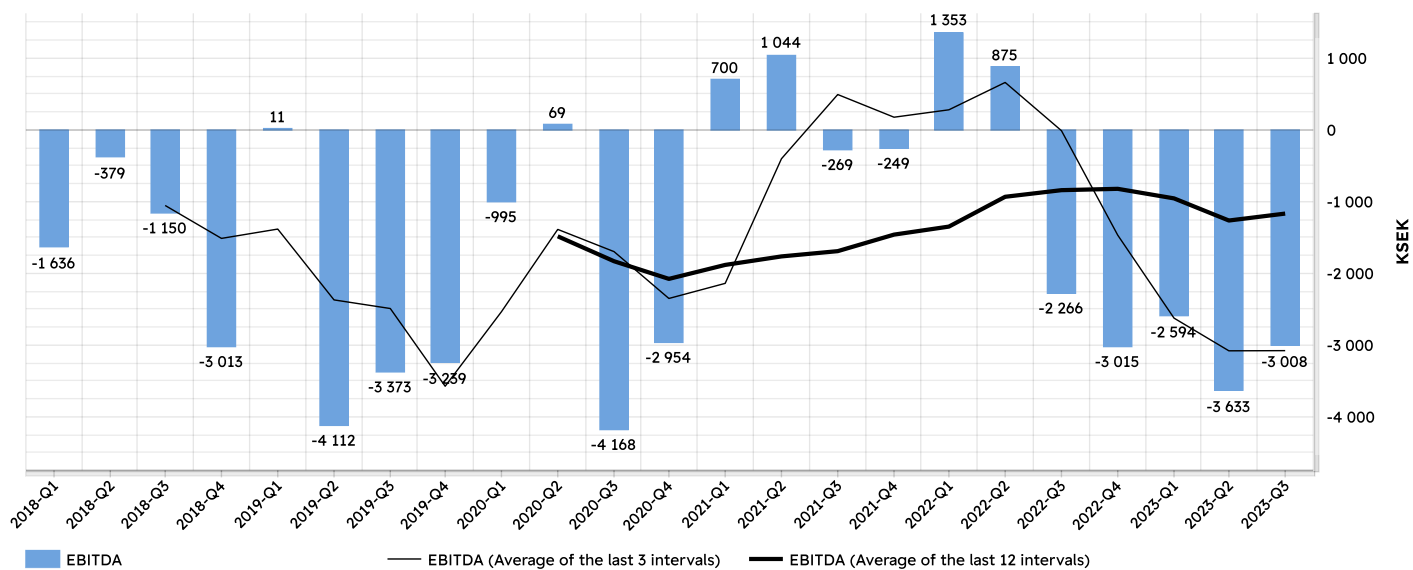
## Development in revenue from 2018, until the bankruptcy of Ryds Båtar AB

Revenue, quarterly, 5 years



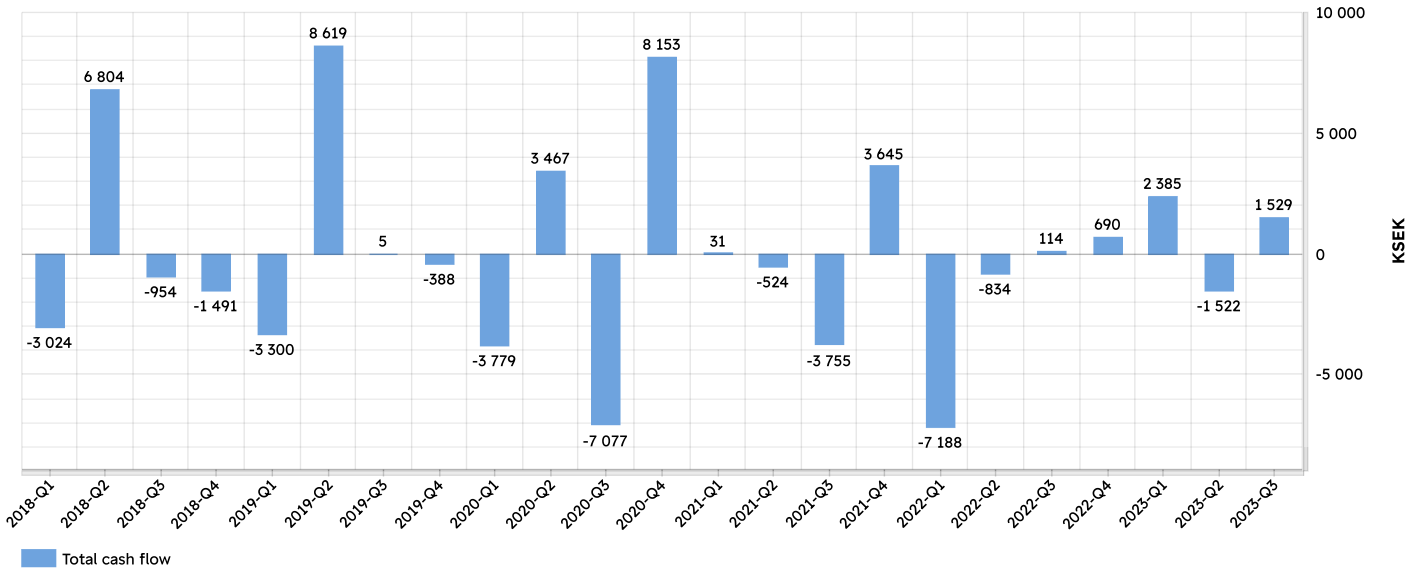
The graph shows the revenue development quarterly from 2018. The revenue shows a clear increase during 2021, the pandemic year, followed by the first half of 2022 showing stable, high revenue. In Q3 2022 the graph shows the effects of the war in Ukraine as well as the increased interest rates on the market.

EBITDA, quarterly, 5 years



The graph shows EBITDA quarterly from 2018. Ryds was profitable in 2021 and when closing the books, EBITDA was positive. First half of 2022 continued the profitable trend before it turned in Q3 2022 because of reasons mentioned above. The final operating result for 2022 was negative.

Total cash flow quarterly, 5 years



Despite a positive development in revenue during 2021 and first half of 2022, the cash flow remained negative. The reason was a shift in the sales mix of boat models where the majority of the boats sold during 2022 were bigger and more expensive. Therefore the need for purchase of materials was great, leading to a negative cash flow during this period. In 2023 the cash flow is boosted by shareholder contribution.